
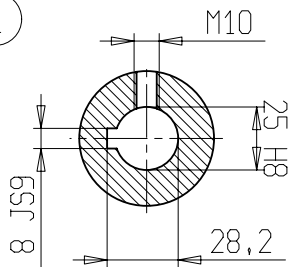
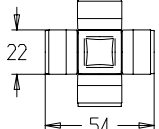
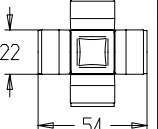
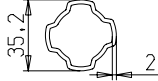
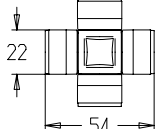
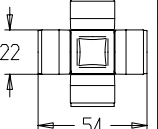

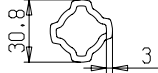


WARNING!

SECTIONS  OF THE ASSEMBLY ARE NOT SHIELDED AND MUST BE SHIELDED BY AN INTERACTIVE GUARDING SYSTEM. BONDIOLI & PAVESI DECLINES RESPONSIBILITY IF PROPER GUARDS ARE NOT PROVIDED OR MAINTAINED.



1	CODICE CODE 053	LATO TRATTORE TRACTOR SIDE	LATO MACCHINA IMPLEMENT SIDE	TIPO-TYPE SFT-S1	CLIENTE / CUSTOMER 3600502 DANI-TECH A/S	RIF. CLIENTE / CUSTOMER REF.	
2	CODICE CODE 505012751			DATA / DATE 15/1/2007	DISIGNATO / DESIGNED BY P.Spennato	TIPO DI MACCHINA / TYPE OF IMPLEMENT	
3	 L=210			LUNGHEZZA MAX IN LAVORO MAX WORKING LENGTH Lw=351	STUDIO / DESIGN TRS1N032001	ORIGINE / ORIGIN DS1N032CE000001	
4	 L=220	VELOCITA' MAX MAX SPEED 540 min ⁻¹	M max 850 Nm	LUNGHEZZA MAX TEMPORANEA MAX TEMPORARY LENGTH Lt=401	NOTE / NOTES SPEC.PER: OS.1; POS.2	SPEC.PER: LUNGHEZZA	
				LUNGHEZZA MAX NON IN ROTAZIONE MAX LENGTH AT STANDSTILL Ls=434			REV.